



# ELK Biotechnology

phospho-MLKL (S358) (6B4) Mouse mAb

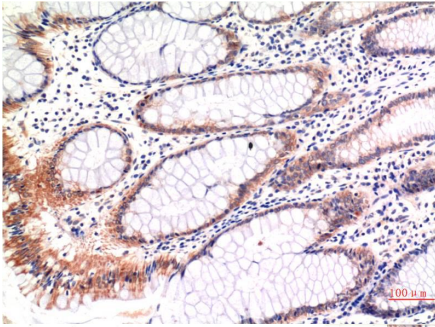
Catalog NO.: EM1320

For research use only.

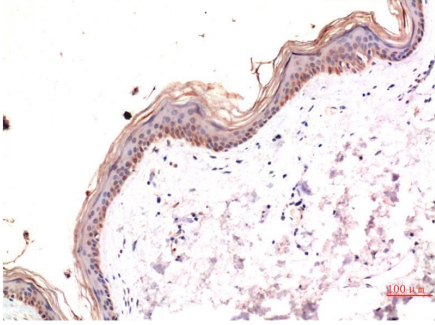
## Overview

---

Product name	phospho-MLKL (S358) (6B4) Mouse Monoclonal antibody
Source	Mouse
Applications	IHC
Species reactivity	Human
Recommended dilutions	<b>Immunohistochemistry:1/100-200</b> <b>NOTE: Optimal dilutions should be determined by the end user.</b>
Immunogen	Synthetic Peptide
Species	Human
Storage	PBS with 0.02% sodium azide and 50% glycerol pH 7.4. Store at -20° C. Avoid repeated freeze-thaw cycles.
Isotype	IgG1
Clonality	Monoclonal
Concentration	1 mg/ml
Observed band	<b>54kDa</b>
GeneID (Human)	197259
Human Swiss-Prot No.	Q8NB16
Cellular localization	Cell membrane Cytoplasm Membrane
Alternative Names	Mixed lineage kinase domain like protein FLJ34389
Background	Mixed lineage kinase domain-like protein (MLKL) is a pseudokinase that was identified as downstream target of RIP3 in the necroptosis pathway. During necroptosis RIP3 is phosphorylated at Ser227 which recruits MLKL and leads to its phosphorylation at Thr357 and Ser358.



Immunohistochemical analysis of paraffin-embedded Human Colon Carcinoma Tissue using Phospho-MLKL S358 (EM1320) Mouse mAb diluted at:200.



Immunohistochemical analysis of paraffin-embedded Human Skin Tissue using Phospho-MLKL S358 (EM1320) Mouse mAb diluted at:200.