



AR- β 1 rabbit pAb

Cat No.:ES1712

For research use only

Overview

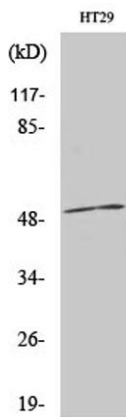
Product Name	AR- β 1 rabbit pAb
Host species	Rabbit
Applications	WB;IHC;IF;ELISA
Species Cross-Reactivity	Human;Mouse;Rat
Recommended dilutions	Western Blot: 1/500 - 1/2000. Immunohistochemistry: 1/100 - 1/300. Immunofluorescence: 1/200 - 1/1000. ELISA: 1/20000. Not yet tested in other applications.
Immunogen	The antiserum was produced against synthesized peptide derived from human ADRB1. AA range:281-330
Specificity	AR- β 1 Polyclonal Antibody detects endogenous levels of AR- β 1 protein.
Formulation	Liquid in PBS containing 50% glycerol, 0.5% BSA and 0.02% sodium azide.
Storage	Store at -20°C. Avoid repeated freeze-thaw cycles.
Protein Name	Beta-1 adrenergic receptor
Gene Name	ADRB1
Cellular localization	Cell membrane ; Multi-pass membrane protein . Early endosome. Colocalizes with RAPGEF2 at the plasma membrane (By similarity). Localized at the plasma membrane. Found in the Golgi upon GOPC overexpression. .
Purification	The antibody was affinity-purified from rabbit antiserum by affinity-chromatography using epitope-specific immunogen.
Clonality	Polyclonal
Concentration	1 mg/ml
Observed band	51kD
Human Gene ID	153
Human Swiss-Prot Number	P08588
Alternative Names	ADRB1; ADRB1R; B1AR; Beta-1 adrenergic receptor; Beta-1 adrenoreceptor; Beta-1 adrenoceptor



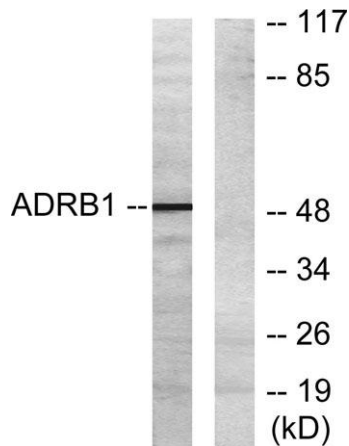


Background

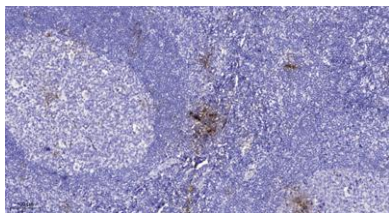
The adrenergic receptors (subtypes alpha 1, alpha 2, beta 1, and beta 2) are a prototypic family of guanine nucleotide binding regulatory protein-coupled receptors that mediate the physiological effects of the hormone epinephrine and the neurotransmitter norepinephrine. Specific polymorphisms in this gene have been shown to affect the resting heart rate and can be involved in heart failure. [provided by RefSeq, Jul 2008],



Western Blot analysis of various cells using AR- β 1 Polyclonal Antibody



Western blot analysis of lysates from HT-29 cells, using ADRB1 Antibody. The lane on the right is blocked with the synthesized peptide.



Immunohistochemical analysis of paraffin-embedded human tonsil. 1, Antibody was diluted at 1:200(4° overnight). 2, Tris-EDTA,pH9.0 was used for antigen retrieval. 3,Secondary antibody was diluted at 1:200(room temperature, 45min).





ELK Biotechnology



+86-27-59760950

ELKbio@ELKbiotech.com

www.elkbiotech.com

23-2, No.388 Gaoxin 2nd Road,Wuhan East Lake Hi-tech Development Zone, Hubei , P.R.C